

*Sinn*

SPEZIALUHREN ZU FRANKFURT AM MAIN

# 104 St Sa A B E

THE CLASSIC PILOT WATCH.





**104 St Sa A B E:** sand-coloured canvas leather strap. Dark-blue dial with sunburst decoration. ø 41 mm (Fig.: 1:1)



**104 St Sa A B E:** grey canvas leather strap. Dark-blue dial with sunburst decoration. ø 41 mm (Fig.: 1:1)



The watch comes in a fine case with one grey and one sand-coloured canvas leather strap, band replacement tool, spare spring bar and a brochure.



## Model 104 St Sa A B E

### The classic pilot watch.

**Limited to 1,000 pieces**

**Case made of stainless steel, polished**

**Dark-blue dial, with sunburst decoration**

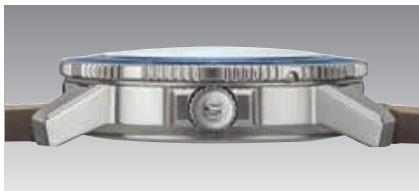
**Ivory-coloured coating on the indices, hands and numerals**

**Captive pilot's bezel with minute ratcheting**

**Sapphire crystal glass on both sides**

**Pressure-resistant up to 20 bar**

**Resistant to low pressure**



Back and side views. (Fig.: 1:1)

The 104 St Sa A B E model is distinguished by its dark-blue dial with sunburst decoration. This elegant colour complements the anodised aluminium pilot's bezel. It imparts a special charm to this limited-edition timepiece (limited to 1,000 units) from the range of classic pilot watches. We have attached the pilot's bezel securely to the polished stainless-steel case. As a harmonious contrast to the blue colouring of the dial and pilot's bezel, the indices, hands and numerals have an ivory coating – a colour accent that immediately invokes memories of historic pilot watches.

In its overall appearance, however, the 104 St Sa A B E still conveys a modern impression, including through its functional character. Accordingly, it is resistant to low pressure and pressure-resistant up to 20 bar.

The stylistic 'Eine von 1000' (one of 1,000) limited-edition marking on the rotor complements the watch perfectly.

The 104 St Sa A B E model comes with two canvas leather straps.



**104 St Sa A B E** – luminous design. (Fig.: 1:1)

Large picture on the front:

**104 St Sa A B E:** sand-coloured canvas leather strap.

As at: February 2020