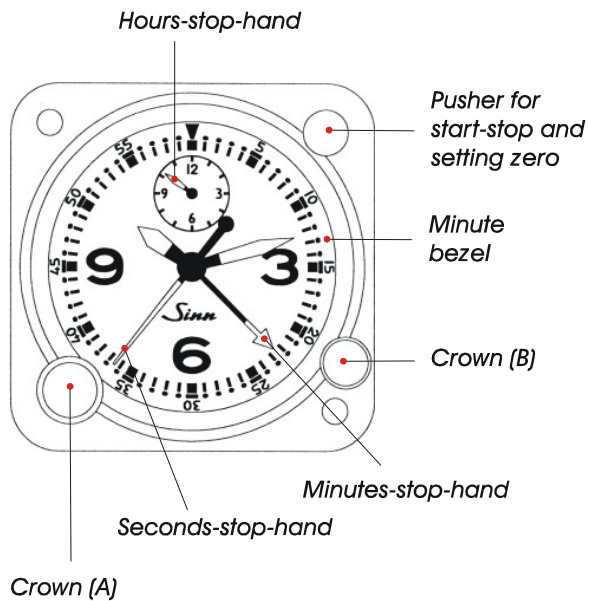


The Watch Model NaBo 56/8



Movement:

- *Revue Thommen Z 942*
- *mechanical 8-day work*
- *manual winding*
- *17 ruby jewels*
- *18.000 vibrations per hour*
- *stop-function*
- *JAA FORM ONE admission respectively certificate*

Display/ Functions:

- *matt black face*
- *numerals, hands and indices covered with white luminous material*
- *hours, minutes, seconds*
- *central seconds and 60-minutes stop-hand, 12-hour recorder*
- *inlying bi-directional bezel with 60-minute division*

Case:

- *aluminium, black anodized*
- *crystal coated on both sides, highly shock resistant mineral crystal*

Starting Procedure and Corrections

Crown (A) has 2 positions:

Position 1: winding

Position 2: (pull out crown)
 setting the time

Crown (B) is used for the correct adjustment of the inlying minute bezel.

Stop Function

Your watch comes with a stop function. It enables you to measure and record periods of up to 12 hours. The central seconds- and minutes-stop-hands and the 12-hour register are used for short-term measurement with the chronograph.

The chronograph is operated with the stop-button.

Pushing the stop-button once starts short-term measurement.

Pushing the stop-button a second time will stop the measurement.

Pushing the button once more will reset the measurement to zero.

Minute Bezel

The bezel is bi-directional and has a 60-minute division.

Crown (B) is used to move the bezel into both directions.

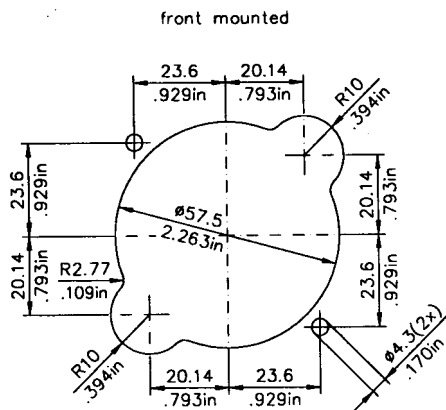
This enables you to measure time periods of up to one hour without the use of the chronograph.

Adjust the bezel in such a way that the minute hand will point directly to the rectangle on the bezel when the time period has run down.

Assembly Gages

There are two possibilities for an installation in the cockpit.

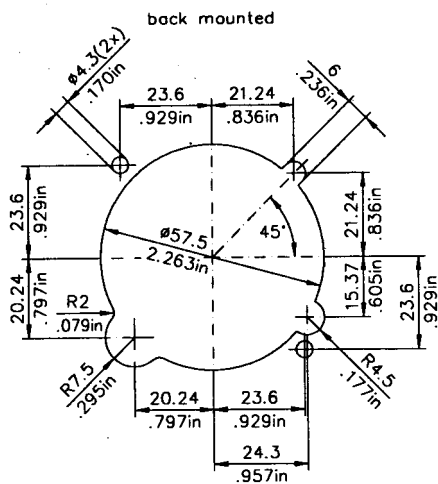
1. installation from the front



with 2 screws
and 2 Tinnermann-nuts (captive nuts)

Advantage: watch can be pulled directly out of the panel by unscrewing.

2. installation from the back



with 2 screws
and 2 nuts

Disadvantage: watch can only be dismantled from the back by opening the panel.

Graduation 1:2

General Directions

The watch possesses a strict admission according to JAA FORM ONE, which certifies the airworthiness and usability status of components of aircrafts, as well as an admission according to the military inspection requirement MIL-C-38207A.

After about eight weeks of running a safe predication concerning the accuracy of the watch can be made. During that time the mechanism comes in, besides, everybody has different habits of wearing.

In case of complaints please ascertain the daily deviation over a longer period, e.g. one week.

Service

In case you have to send in your watch, we need the following details for an optimal processing:

- name, address (if applicable telephone/telefax, during the day)*
- Desires or details about complaints, e.g. What is defective? When did the fault occur (time)? How often did the fault occur?*
- If possible, please announce the date of purchase and your customer number (see account) or enclose a copy of your account. – Thank you!*

You will get a notification as soon as your watch arrives.

For reasons of insurance we recommend sending your watch as traceable package.

Our customer call center will be ready to help you under

direct access +49-69-978414-400

fax number +49-69-978414-401

e-mail kundendienst@sinn.de

Sinn

SPEZIALUHREN ZU FRANKFURT AM MAIN

*Sinn Spezialuhren GmbH
Im Földchen 5-7 D – 60489 Frankfurt am Main*